

you can
Canon

iRC4080i
iRC4580i
iRC5185i

Productive, affordable colour
communication for your office

Colour printing.

Secure.



iRC4080i / iRC4580i / iRC5185i

COLOUR

Cost-effective colour for everyday use

Colour when you need it.

Colour with control.

Canon makes colour affordable for all businesses. The iRC4080i, iRC4580i and iRC5185i multifunctional printers employ new levels of intelligence to enhance document communication throughout your office. Control how colour is used, where it's used and how much it costs you.

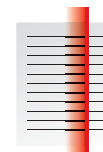
Affordable colour

Not so long ago incorporating colour in your business meant escalating costs. Canon's Office Colour Range provides the affordable solution. The iRC4080i/iRC4580i/iRC5185i is an intelligent, cost-effective multifunctional device that brings the power of colour communication to your business for little more than you would expect to pay for black and white printing. And it gives you unrivalled levels of management control, allowing you to oversee colour usage throughout your business.

Controllable colour

There are many ways that Canon's iRC4080i/iRC4580i/iRC5185i help you control colour. Auto-Colour Sensing means that the device detects whether or not a page, or pages within a document, contain colour, and then prints them accordingly. So when colour isn't required, you don't pay for it - just as if you were using a black and white device! It's also possible to set the printer driver to default to black and white, providing colour only when specified by the user.

Colour not present



Colour present



Auto-Colour Sensing helps reduce costs

Additional management control

Incorporating Canon's optional iWAM MEAP software takes your printing knowledge to a different level. iWAM MEAP provides an

Confident control

ongoing and detailed insight into who is printing what, where, and how much it's costing you.

Further control comes courtesy of an inbuilt Department ID mode which allows you to specify limits on colour usage by both user and department, helping to ensure colour is used efficiently and effectively when it's needed.

The new Access Management System (AMS) featured within uniFLOW Output Manager (UFOM), allows IT managers to create access profiles to device functions (colour printing, fax, scan) for single users, groups, departments enabling organisations to control costs, and security.





iRC4080i / iRC4580i / iRC5185i

CONTROLLABLE COLOUR

Security conscious

Canon ensures your business information is safe and secure. Device access can be controlled via passwords, your company's network log-in procedure, or even fingerprints! Documents can be held in secure mailboxes, until the relevant user is ready to print.

Scanned documents can also be encrypted before sending to others.

Security covered

For highly sensitive material, a secure watermark can be embedded into a printed

document, becoming prominent when someone attempts to make a copy. Network authentication tools ensure that only authorised PC's or Macs can communicate with the iRC4080i/iRC4580i/iRC5185i. Furthermore, device hard disks can be erased or encrypted, and "job logs" concealed.

Confidential documents sent to print



Secure watermark



If document is copied, watermark becomes visible



Common Criteria

Each device and the HDD Data Encryption Kit containing the Canon MFP Security Chip 1.00, qualify for EAL3 status under the Common Criteria Program. The Common Criteria Program, also known as ISO 15408, is the recognised global standard for information technology security evaluations and defines security requirements and establishes procedures for evaluating IT security.

Effortless IT management

The Canon iRC4080i/iRC4580i/iRC5185i comes "network-ready", so installing on your network is a simple task.

iW Management Console (iWMC) is a web-based utility that facilitates centralised management of networked devices - ideal for busy IT departments. This standard feature enables remote management of device settings, discovery of new devices using automated tasks, and device error notifications via email.

Emails can indicate when toner has run out as well as device problems, so they can be dealt with easily and quickly, ensuring minimal downtime. iWMC also allows administrators to replicate settings and address books across multiple devices.

Canon's unique e-Maintenance system automatically reports any problems, so there's no need to worry about constant monitoring.

Everything in colour from one powerful performer

The iRC4080i/iRC4580i/iRC5185i frees up valuable space in your office. Instead of numerous space-consuming devices, empower your staff to print, copy, fax, scan and send information in colour intelligently from one compact, productive device. And with web-access staff are able to browse the internet and then print directly from the device.

Performance printing

The iRC4080i/iRC4580i/iRC5185i resides on your network to provide easy shared access amongst groups of users. Optimised for extensive colour document creation, the iRC4080i prints and copies in colour at a swift 36 pages per minute (ppm), the iRC4580i at 40 ppm and Canon's flagship iRC5185i at a productive 51 ppm. Printing supports industry-standard PS/PCL, and Canon's unique UFR II, enabling enhanced network processing speeds.

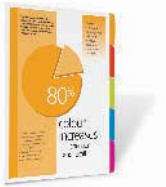
Print at 40 ppm

swift 36 pages per minute (ppm), the iRC4580i at 40 ppm and Canon's flagship iRC5185i at a productive 51

Printing is carried out from the comfort of users' desktops via a simple-to-use interface. And a large colour touch-screen makes operation at the device equally simple.



Tabbed



Hole Punched



Saddle Stitched Booklet



A3 Landscape Hole Punched



Professional printing

The iRC4080i/iRC4580i/iRC5185i gives you the confidence to create the most professional-looking documents with little effort. It's easy to produce stapled or hole-punched reports, eye-catching booklets and impactful customer proposals in colour, and on a variety of different media types.

Canon's iWPM software enhances productivity further. Normally, when you want to create a report combining information from different files such as Word or Excel, you need to print them first and then manually collate. This takes time. iWPM lets you carry out the collation effortlessly and electronically at your desktop, prior to printing a completed version.

Furthermore, Job Block Combination allows different types of documents, from A5 -SRA3 to be scanned/copied, and then combined using the touch-screen prompts. This electronic file can be easily manipulated and printed as a complete document.

Quality printing

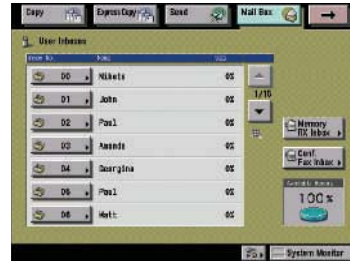
Using Canon's Spherical Toner, print quality is superb at 1200 dpi and prints look crisp and sharp from the first to the last. A matt finish means you can make notes directly on colour prints - ideal for PowerPoint handouts and when reviewing reports.



Powerful communication

You can communicate in ways not previously possible, and far more efficiently. Using the iRC4080i/iRC4580i documents are scanned at 70 images per minute (ipm) via the sturdy document feeder and can be instantly 'dispatched' as PDFs to a huge variety of locations - such as network folders, email addresses and mailboxes. Integration with database applications is also achievable using software such as Canons iWDM or eCopy. For maximum productivity, look to the iRC5185i with its innovative "one pass" duplex system. This scans both sides of paper simultaneously without requiring the paper to be turned over, helping maintain the integrity of the original document and allowing incredible scanning speeds of 100 ipm.

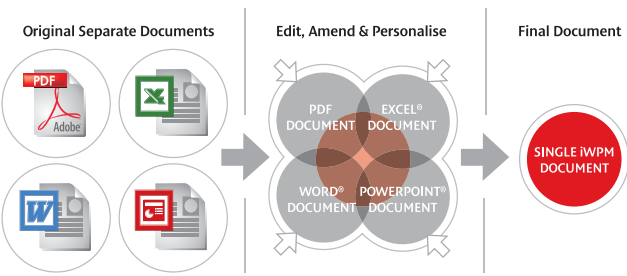
Don't equate scanning with decreased legibility. Trace and Smooth technology can actually improve the clarity of scanned documents. Network speeds aren't compromised either, as PDFs are automatically compressed prior to being sent.



Mailbox

Mailboxes for added versatility

The iRC4080i/iRC4580i/iRC5185i has built-in mailboxes to aid versatility and confidentiality. Mailboxes act as secure storage at the device for all documents, and can be established for individuals and groups of users. Any document can be scanned, sent to, or printed directly from a mailbox at your convenience - handy if you don't want a confidential report lying around before you have a chance to retrieve it - and you can also preview documents in your mailbox at the device before printing.



iW Publishing Manager

Communicate quickly and effectively.

Imagine the impact.

Produce the results you never imagined

Take your business in a new direction with the iRC4080i/iRC4580i/iRC5185i. Think of all the work you currently send to the local print shop. Now you can do it quickly and more cost-effectively in the office.

1 Professional finishing

The Finisher W1 provides three trays and a 4,000 sheet capacity. It also accommodates 50 sheet stapling for sturdier report production.

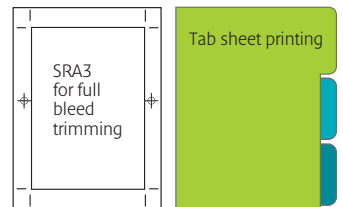
To create the most professional-looking documents with no more than a few simple mouse clicks, from the comfort of your desktop turn to the Saddle Finisher W2.

Professional Output

With it you can produce automatically folded booklets. It's even possible to create booklets up to an impressive A4 in size. Add Canon's iWPM, and you can combine information from different files to create a staff magazine, or even your own company brochure!

3 Finished documents

Print or copy colour reports and then corner-staple them for a superb finish. Staple capacity is 50 sheets of A4 or 30 sheets of A3, with a capacity of 500 A3 sheets or 1,000 A4 - A5R in a single print run.



4 Document feeder/image reader

A 100 sheet document feeder helps cope with scanning and sizeable copy runs, accommodating documents with different sized pages.

The image reader combined with Universal Send enables you to scan documents which can be sent instantly to email addresses, mailboxes and network folders.

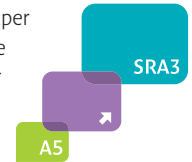
6 Advanced technology

The iRC4080i/iRC4580i/iRC5185i aids efficiency. Print documents using both sides of paper and you can reduce paper consumption and costs too. A sleep mode helps cut down on power consumption when not in use. The device also adheres to the strictest environmental standards such as RoHS, which restricts the use of hazardous substances.

Using MEAP (Multifunctional Embedded Application Platform), Canon's Java based application platform, enables new and customised software to be incorporated directly within your device. This way you can future proof your investment.

7 8 9 Be productive

A total of 5,000 sheets gives huge versatility from 6 different sources, allowing you to produce stunning colour documents combining different media types and weights. Configure the iRC4080i/iRC4580i/iRC5185i with the 2,700 sheet Paperdeck and you have a comprehensive paper supply equipped for the most demanding workloads. Each of the 550 sheet cassettes are user-adjustable to cope with paper sizes between A5 - A3. Imagine producing A5 colour leaflets for mailing or handing out to customers, or A3 posters to display in the office. The 100 sheet manual bypass accommodates a variety of media up to 253gsm + SRA3. You can also use it to print directly onto tab-sheets, which act as section dividers for important business reports.



1 Saddle finisher W2 - optional

2 Hole punch - optional

3 Finisher X1 - optional

4 DADF (100 sheets) - optional

5 Standard output tray

6 Advanced Technology

7 Paper cassettes (2 x 550 sheets)

8 Paper cassettes (2 x 550 sheets) - optional

9 Paperdeck (2700 sheets) - optional

Specifications iRC4080i / iRC4580i / iRC5185i

Type	Desktop
Maximum Original Size	A3
Copy Sizes	A3, A4, A4R, A5R, 305 x 457mm
Cassette	A5R - SRA3, (320 x 450mm)
Stack Bypass	Envelopes, 100 x 148mm to 320 x 457mm
Resolution	
Reading	600dpi x 600dpi
Copying	600dpi x 600dpi
Printing	1200dpi x 1200dpi (Text/Line only)
Halftone	256 Gradations
Copy/Print Speed	
A4	51ppm B+W (iRC5185i), 45ppm (iRC4580i), 40ppm (iRC4080i)
A3	51ppm Full Colour (iRC5185i), 40ppm (iRC4580i), 36ppm (iRC4080i)
A4	26ppm B+W (iRC5185i), 23ppm (iRC4580i&4080i)
A3	26ppm Full Colour (iRC5185i), 20ppm (iRC4580i&4080i)
Magnification	
Zoom Mode	25% - 400% (in 1% increments)
Fixed	25%, 50%, 71%, 100%, 141%, 200%, 400%
First Copy Time	
Black-and-White	6.2sec
Full Colour	8.0sec
Warm-Up Time	4 minutes(iRC5185i), 5 minutes(iRC4580i&4080i)
Multiple Copies/Prints	1 to 9,999 sheets
Duplexing	Standard automatic stackless
Paper weight	
Cassette	64 to 209g/m ²
Stack Bypass	64 to 253g/m ²
Duplex	64 to 209g/m ²
Paper Supply	
Standard	550 sheets x 2 cassettes (80g/m ²)
Stack Bypass	100 sheets at 80g/m ²
Optional	550 sheets x 2 cassettes (80g/m ²)
Paper Deck	2,700 sheets (80 g/m ²)
Total capacity	5,000 sheets
CPU	Canon Custom Processor, 666MHz+400MHz(iRC5185i&4580i), 533MHz+400MHz(iRC4080i)
Memory	1.5GB
Hard Disk Drive	80GB
Interface	Ethernet (100Base-TX/10Base-T), USB2.0
Power Supply	220-240V/6A/50Hz
Power Consumption	1.5 kW max.
Dimensions (W x D x H)	620 x 849 x 1,215mm(with ADF), 620 x 849 x 1,074mm (with Platen Cover)
Weight	147.5kg(with Image Reader-G1), 140.5kg(with Image Reader-F1), 127kg(with Image Reader-E1)
PRINT SPECIFICATION (STANDARD)	
PDL	PCL5c, PCL6, PostScript3 Emulation and UFR II
Resolution	1200dpi x 1200dpi(Text/Line only), 600dpi x 600dpi
Memory	1.5GB (Uses Main unit RAM)
Hard Disk	80GB (Uses Main unit HDD)
CPU	iR C5185i&4580i: 666MHz & 400MHz (Uses Main unit CPU) iR C4080i: 533MHz & 400MHz (Uses Main unit CPU)
PS Fonts	Roman136
PCL Fonts	Roman80, Bitmap1, OCR2
Supported OS	
PCL5c	Windows 98/Me/2000/XP/Server2003/Vista
PCL6	Windows 2000/XP/Vista
PS	Windows 98/Me/2000/XP/Server2003/Vista, Mac OSX (10.2.8 or later)
UFR II	Windows 2000/XP/Server2003/Vista, Mac OSX(10.2.8 or later)
Mac-PPD	Mac OS 9.1 or later
Interface	Ethernet (100Base-TX/10Base-T), USB 2.0
Network Protocol	TCP/IP(LPD/Port9100/WSD/IPP/IPPS/SMB/FTP), IPV6, IPX/SPX(NDS,Bindery), AppleTalk
Pull Scan	Network TWAIN Driver (75 to 600dpi 24bit colour/8bit grayscale/Black & white)
SEND SPECIFICATION (STANDARD)	
Scan Speed	70ipm (Colour/B&W)
A4, 300dpi	100ipm one pass duplex scan (Colour Image Reader-G1 & iR C5185i only)
Scan Resolution	100dpi,150dpi,200x100dpi,200dpi, 200x400dpi,300dpi,400dpi,600dpi
Destinations	E-Mail/Internet FAX(SMTP), PC(SMB,FTP,NCP), iWDM, WebDAV
Address Book	LDAP, Local(Max.1800)
File Format	
Single Page	TIFF, JPEG, PDF
Multi Page	TIFF, PDF
UNIVERSAL SEND PDF ADVANCED FEATURE SET-A1	
PDF	High Compression PDF, Searchable PDF(OCR), Scalable PDF(Trace and Smooth)
UNIVERSAL SEND PDF SECURITY FEATURE SET-A1	
PDF	Encrypted PDF, PDF with device signature

DOCUMENT FEEDER (STANDARD FOR COLOUR IMAGE READER-F1/G1)	
Paper Size	A3, A4, A4R, A5, A5R
Paper Weight	
Single Sided Original	42 to 128 g/m ²
Double Sided Original	50 to 128 g/m ²
Max. Number of Originals	100 sheets (80 g/m ²)
Document Scanning Speed (max.)	
Copy	A4 51ipm 600dpi (Colour/B&W)
Scan	A4 70ipm 300dpi (Colour/B&W) 100ipm one pass duplex scan (Colour Image Reader-G1 & iRC5185i only)
Dimensions (W x D x H)	576x552x255mm(F1), 615x560x260mm(G1)
DF Weight	Approx.29kg (F1), 36kg(G1)
CASSETTE FEEDING UNIT-Z2	
Type	2 Front-loading adjustable drawers
Paper Size	305 x 457mm, A3, A4, A4R, A5R
Paper Weights	64 - 209 g/m ²
Paper Capacity	550 sheets (80 g/m ²) x 2 cassettes
Dimensions (W x D x H)	620 x 705 x 312mm
Weight	Approx. 30kg
PAPER DECK-Y1	
Paper Size	A4
Paper Weight	64 to 209 g/m ²
Paper Capacity	2,700 sheets (80 g/m ²)
Dimensions (W x D x H)	324 x 569 x 472 mm
Weight	Approx. 30kg
FINISHER-X1	
Number of Trays	One tray
Tray Capacity	
A4-A5R	1000 sheets
A3	500 sheets
Staple Position	Corner Staple
Staple Capacity	
A4	50 sheets (80g/m ²)
A3	30 sheets (80g/m ²)
Weight	Approx. 16kg
FINISHER-W1/SADDLE FINISHER-W2	
Number of Trays	3 Trays
Tray Capacity	
Tray A	250 sheets Max (A4)
Tray B	1,300 sheets Max (A4)
Tray C	2,450 sheets Max (A4)
Staple Position	Corner, Double, Saddle Stitch (W2 only)
Staple Capacity	
A4	50 sheets (80g/m ²)
A3	30 sheets (80g/m ²)
Saddle Stitch Specifications (Saddle Finisher-W2 only)	
Paper Size	305 x 457mm, A3, A4R
Staple Capacity	1 to 15 sheets (60 pages, 64 - 80g/m ²) 1 to 10 sheets (40 pages, 81 - 105g/m ²)
Dimensions	
W1	672 x 656 x 1173mm
W2	672 x 656 x 1173mm
Weight	
W1	Approx. 50kg
W2	Approx. 70kg
ACCESSORIES (OPTIONAL)	
	Colour Image Reader-G1 (DADF/one pass duplex scanning, iR C5185i only), Colour Image Reader-F1 (DADF), Colour Image Reader-E1 (Platen cover), Barcode Printing Kit-A1, Web Access Software-E1, HDD Data Erase Kit-A1, HDD Data Encryption Kit-B1, Secure Watermark-A1, Encrypted Printing Software-C1, Super G3 FAX Board-V1, Plain Pedestal-E2, FL Cassette-X1 GP, Stamp Unit-B1, Stamp Ink Cartridge-C1, Copy Tray-N1, Copy Tray-M1, Staple CRG-J1 GP, Staple CRG-D3 GP (for Saddle stitch), Puncher Unit AG1 (2hole)/A11 (4hole), ADF AccessHandle-A1, Remote Operators Software Kit-A2, Voice Guidance Kit-B1, Voice Operation Kit-A1, Document Tray-J1, Key Switch Unit-A2, Card Reader-D1, Access Management System Kit-A1
SOFTWARE (OPTIONAL)	
	iWPM, iWDM, eCopy, iWAM MEAP, AMS with UniFLOW Output Manager 3.1
Some images are simulated for clarity of reproduction. All data is based on Canon's standard testing methods. This leaflet and the specifications of the product have been developed prior to the date of product launch. Final specifications are subject to change without notice.™ and ®: All company and/or product names are trademarks and/or registered trademarks of their respective manufacturers in their markets and/or countries. Canon Recommends you use Canon Media for the best results. Please check media (paper) compatibility list to see which variety of paper/media is recommended. Canon's GENUINE logo means Quality all-round performance. For more information, go to www.canon-europe.com/Canon_Copier_Consumable_Technology	



you can
Canon

Canon Inc.
www.canon.com

Canon Europa N.V.
www.canon-europe.com

English-UK Edition 0066W144
© Canon Europa NV 2007

Canon (UK) Ltd
Woodhatch, Reigate
Surrey RH2 8BF
Telephone No: 08000 353535
Facsimile No: 01737 220022
www.canon.co.uk

Canon Ireland
Arena Road, Sandford
Industrial Estate
Dublin 18, Ireland
Telephone No: 01-2052400
Facsimile No: 01-2958141
www.canon.ie